

B&C ID.501 /WOMEN - FW 151

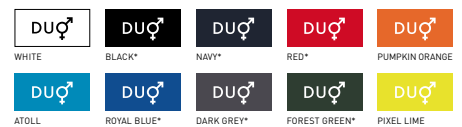
**OUTER
WEAR
/UNIT**



MEDIUM FIT

The micro-fleece Basic by B&C

- Tone-on-tone full zip opening with zip pull
- Necktape
- 2 front pockets with zips and zip pulls
- Essential contemporary look
- Open hem
- Feminine cut



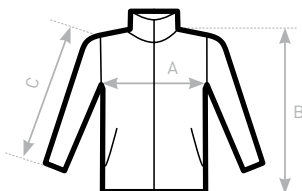
* COLOURS AVAILABLE IN 3XL

- 100% polyester anti-pilling micro-fleece
- 280 g/m²
- XS - S - M - L - XL - 2XL - 3XL*
- 5 pcs/pack & 15 pcs/carton

* ONLY AVAILABLE IN BLACK, NAVY, RED, ROYAL BLUE, DARK GREY AND FOREST GREEN



**DUO♂
CONCEPT**
with B&C ID.501



SIZES [CM]

B&C ID.501 /WOMEN FW 151	XS	S	M	L	XL	2XL	3XL
A HALF CHEST	43,5	46,5	49,5	52,5	55,5	58,5	61,5
B BODY LENGTH AT CB	60	61,5	63	64,5	66	67,5	69
C SLEEVE LENGTH	59	60	61	62	63	64	65

